

# PCAPP TRAINING FACILITY

## PUEBLO, COLORADO

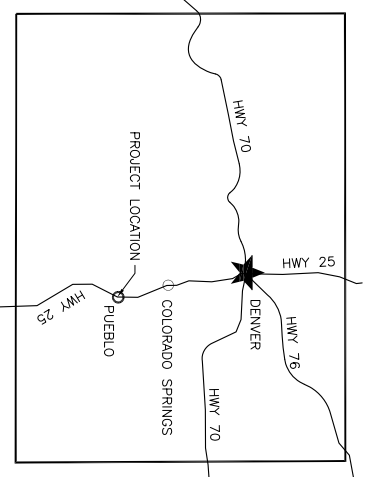
### PROJECT LOCATION

### PROJECT DIRECTORY

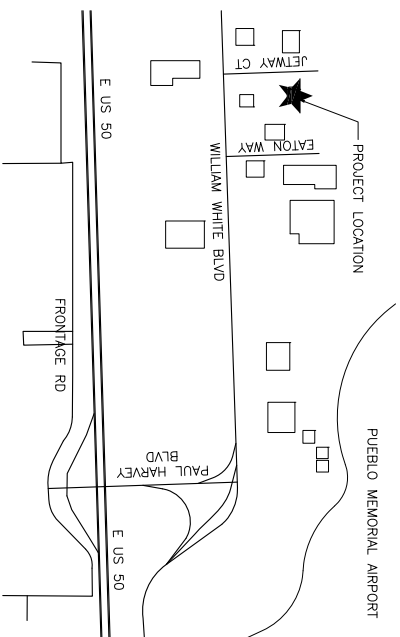
### SHEET INDEX

### CODE REVIEW

#### VICINITY MAP



#### LOCATION MAP



#### Owner:

PECO FOUNDATION  
501 N. MAIN, SUITE 200  
PUEBLO, CO 81003

#### Architect:

SEH, INC.  
RICHARD CHERRY  
503 N. MAIN, 225  
PUEBLO, CO 81003  
V-719-542-6481  
C-729-350-0944  
rcherry@sehinc.com

#### Landscape Architect:

Don Clausen  
1429 Chestnut  
Canon City, CO 81212  
719.273.4858

#### Structural:

Consulting Engineers, Inc.  
John Chismom, PE  
3216 Shalimar Terrace  
P.O. Box 8564  
Pueblo, CO 81008  
719.924.0012

#### Mechanical:

RHM Group, Inc.  
Kristen Crenna, PE  
128600 West Colfax Ave.  
Suite A-400  
Denver, CO 80215  
303.239.0909

#### Electrical:

RHM Group, Inc.  
John Chismom, PE  
128600 West Colfax Ave.  
Suite A-400  
Denver, CO 80215  
303.239.0909

#### Civil:

SEH, INC.  
Jimmie Hoyson, P.E.  
503 N. Main, Suite 225  
Pueblo, CO 81003  
719.542.6481

#### GENERAL

- 00.1 TITLE SHEET
- 00.2 CODE PLANS
- 00.3 ADA STANDARDS
- 00.4 ADA STANDARDS

#### CIVIL

- CA1.0 ARCHITECTURAL SITE PLAN
- CI.0 SITE DEMOLITION PLAN

#### LANDSCAPE

- LS.1 SITE LANDSCAPE AND SCHEDULES
- IR.1 SITE IRRIGATION AND DETAILS

#### STRUCTURAL

- ST.1 VESTIBULE, MEZZANINE, COMPRESSOR ROOM, MECHANICAL STRUCTURAL DETAILS AND NOTES
- SS.1 ARCHITECTURAL STRUCTURAL DETAILS AND NOTES

#### ARCHITECTURAL

- A0.1 GENERAL INFORMATION
- A0.2 FLOOR PLANS AND STANDARD FIRE DETAILS
- A1.1 REFLECTED CEILING PLAN
- A1.2 MEZZANINE PLAN, REFLECTED CEILING PLAN, AND ENLARGED PLANS
- A1.3 FINISH FLOOR PLAN
- A2.4 FINISH ELEVATIONS AND NEW ELEVATIONS
- A3.0 WALL SECTIONS
- A3.1 INTERIOR ELEVATIONS
- A4.0 SCHEDULES AND TYPES
- A4.1 DETAILS
- A5.1 DETAILS
- A5.2 DETAILS, CASEWORK DETAILS, STAR DETAILS

#### MECHANICAL AND PLUMBING

- M0.1 MECHANICAL LEGEND
- M1.0 HVAC NEW PLAN
- M1.1 MECHANICAL PIPING PLAN
- M1.2 PLUMBING PLAN
- M1.3 MECHANICAL PLAN MEZZANINE LEVEL
- M1.4 ENLARGED RESTROOMS MECHANICAL PLANS
- M2.0 MECHANICAL CONTROL DIAGRAM
- M2.1 MECHANICAL CONTROL DIAGRAM
- M2.2 PLUMBING ISOMETRICS
- M3.0 MECHANICAL SCHEDULES

#### ELECTRICAL

- E0.0 ELECTRICAL LEGEND
- E1.0 ELECTRICAL SITE PLAN
- E1.1 ELECTRICAL POWER PLAN
- E1.2 ELECTRICAL LIGHTING PLAN
- E1.3 ELECTRICAL SPECIAL SYSTEM PLAN
- E1.4 ELECTRICAL PLAN - MEZZANINE LEVEL
- E2.0 ELECTRICAL DIAGRAMS AND DETAILS
- E3.0 ELECTRICAL ONE-LINE DIAGRAM
- E3.1 ELECTRICAL SCHEDULES
- E3.2 ELECTRICAL SCHEDULES

#### BUILDING CODE ANALYSIS

Project: PCAPP Training Facility  
Client: Pueblo Development Foundation  
Address: Pueblo, CO 81003  
Date: September 30, 2011

- 2009 INTERNATIONAL BUILDING CODE
- 2009 INTERNATIONAL FIRE CODE
- 2009 INTERNATIONAL ELECTRICAL CODE
- 2009 INTERNATIONAL PLUMBING CODE
- 2009 ICC ANS/A117.1
- 2009 NEC

#### BUILDING DATA:

Occupation: B  
Construction Type: TYPE II-B  
Fire Suppression Sys.: Yes  
Stories: 1 with mezzanine  
Height: 22'

Total Floor Area: 25,751 Square Feet  
Mezzanine Level: 528 Square Feet  
Total Building: 26,279 Square Feet

Site Zoning: I-2 Light Industrial  
Building Use: Industrial Training  
Building Area: 26,279 Square Feet  
Site Coverage: See Site Coverage Plan  
Setback: 55'-0" (See Building Code)  
Height Limit: 55'-0" (See Building Code)

#### BUILDING CODE:

- A. Occupancy (IBC Chapter 3)
  - 1. Occupancy Classifications
  - 2. STORAGE (S-2)
- B. Occupancy Separations with Sprinkler
  - a. None, Nonseparated Oc
  - B. Allowable Area (IBC Chapter 5)
    - a. Allowable area per floor: B: 19,000 Square Feet (IBC 503)
    - b. Total Allowable Area: 25,751 Square Feet
    - c. Total Area: 25,751 Square Feet
    - d. Actual Area: 25,751 Square Feet

- a.  $A = (A_1 + (A_2 \times H) + (A_3 \times H))$
- $A_1 = 15,751 \times 3.1 = 49,228$
- $A_2 = (23,000 + (23,000 \times 21 + (17,250)) = 146,253$
- $A_3 = 25,751 \times 2 = 51,502$
- $A = 146,253 + 51,502 = 197,755$
- b. Allowable height: 3 stories or 55'-0", 22' actual height

- c. Fire Resistive Requirements Construction
  - 1. Type B requirements (IBC Chapter 6)
  - 2. Structural Frame: 0 Hour
  - 3. Exterior Non-Bearing Walls: 0 Hour (Table 602, separation over 30')
  - 4. Interior Partitions: 0 Hour
  - 5. Floor Construction: 0 Hour
  - 6. Floor Construction: 0 Hour

- 2. Exterior Opening Protection: 0 Hour (IBC Table 602)

- D. Egress Requirements (IBC Chapter 10)
  - 1. Occupant Load: 326 (See Occupancy Count Table Sheet G0.2)
  - 1.1. Required Exit Width: 24.45' Min (Occupant Load/2 x 0.15')
  - 2. Minimum Number of Required Exits: 2
  - 3. Maximum Travel Distance: 250' feet, Actual Travel Distance: 126'
  - 1. Maximum Common Path of Travel: 75' feet

- E. Plumbing Fixture Requirements (IBC Chapter 29)
  - 1. Occupancy: Mixed Use
  - 2. Restroom Fixture Requirements

#### RESTROOM FIXTURE REQUIREMENTS

| Occupant Count   | Water Closets  | Lavatories     |
|------------------|----------------|----------------|
| Required         | 380            | 5              |
| Required Women   | 190            | 2              |
| Required Men     | 190            | 2              |
| Required Urinals | 0              | 0              |
| Total Provided   | 6M/6W/1 Unisex | 3M/4W/1 Unisex |

- 3. Drinking Fountains: 1 Required, 2 Provided
- 4. Service Sinks: 1 Required, 1 Provided



Short Elliott Hendrickson Inc.  
Tatcher Building  
503 North Main Street, Suite 225  
Pueblo, CO 81003-3138  
719.542.6481 main | 719.542.1251 fax  
www.sehinc.com

BID SET  
NOT FOR CONSTRUCTION

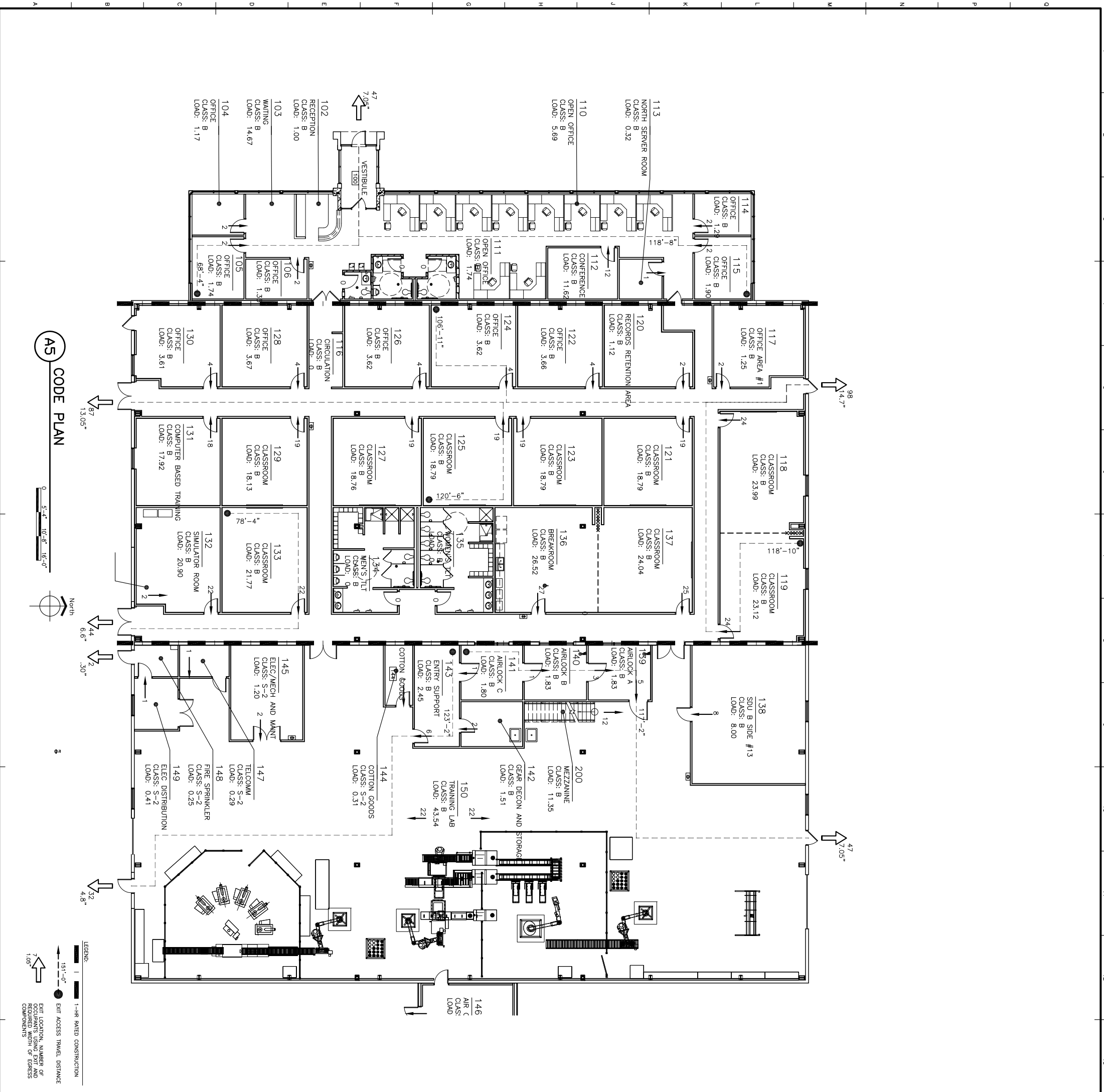
| MARK | DATE | DESCRIPTION |
|------|------|-------------|
| -    | -    | BID SET     |

2011  
PCAPP TRAINING FACILITY  
PUEBLO, COLORADO

SEH FILE NO. 117652  
ISSUE DATE 11/14/11  
DESIGNED BY RS, RE  
DRAWN BY  
PROJECT MGR

SHEET CONTENTS  
TITLE SHEET  
-----  
DRAWN BY  
PROJECT MGR

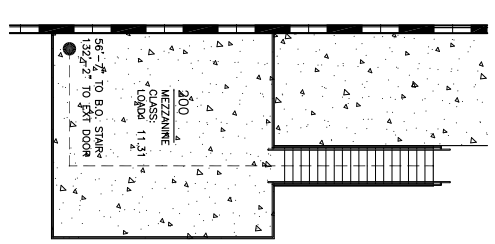
G0.1



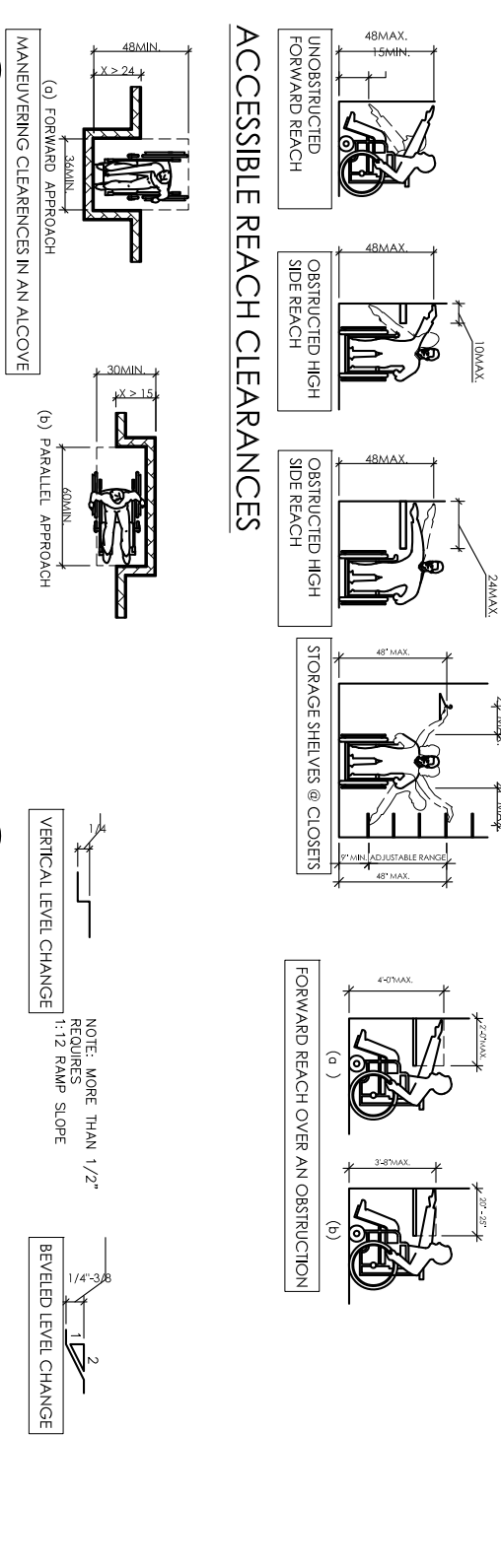
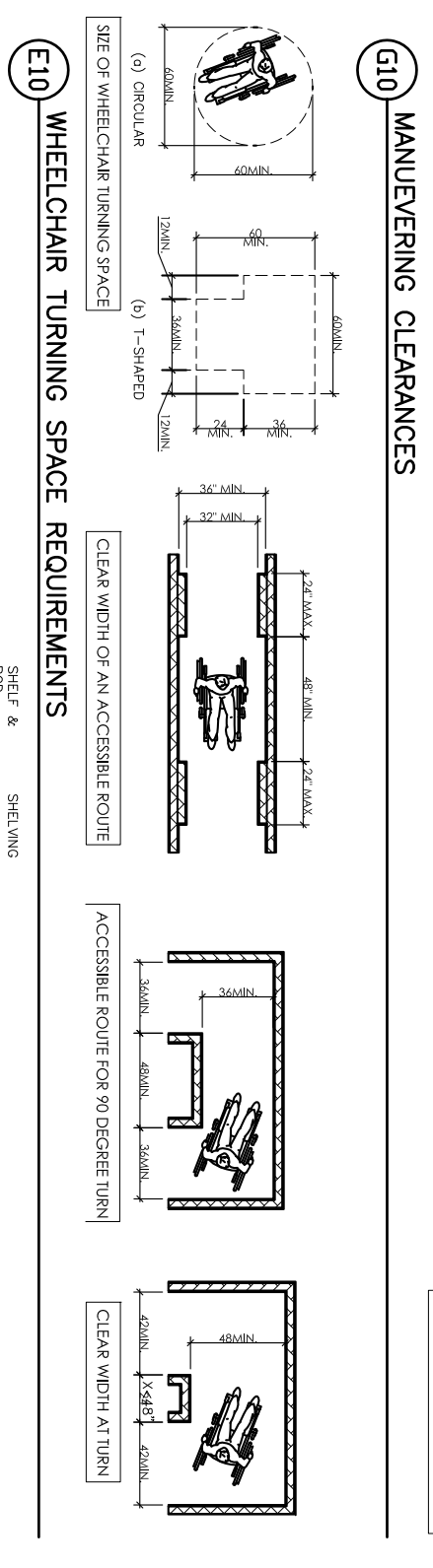
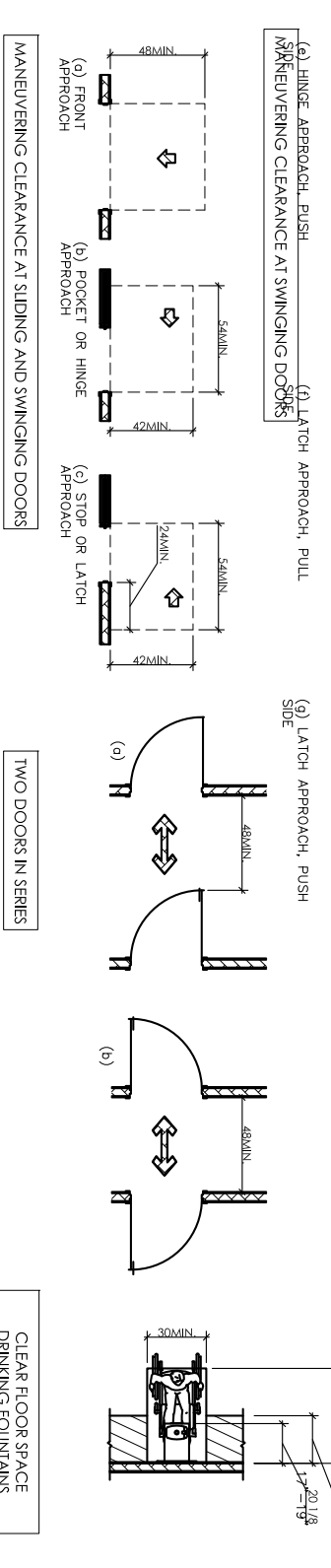
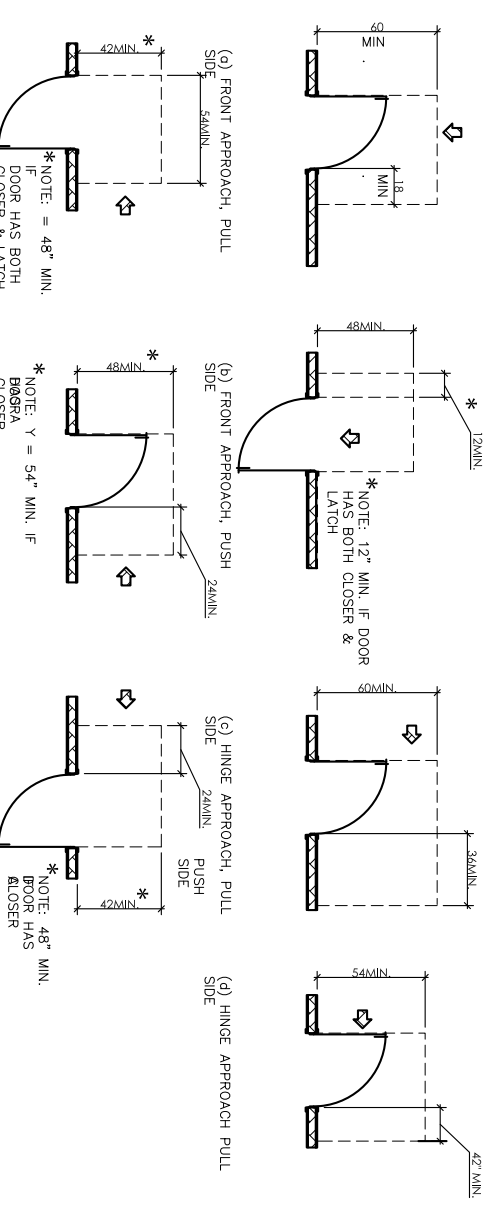
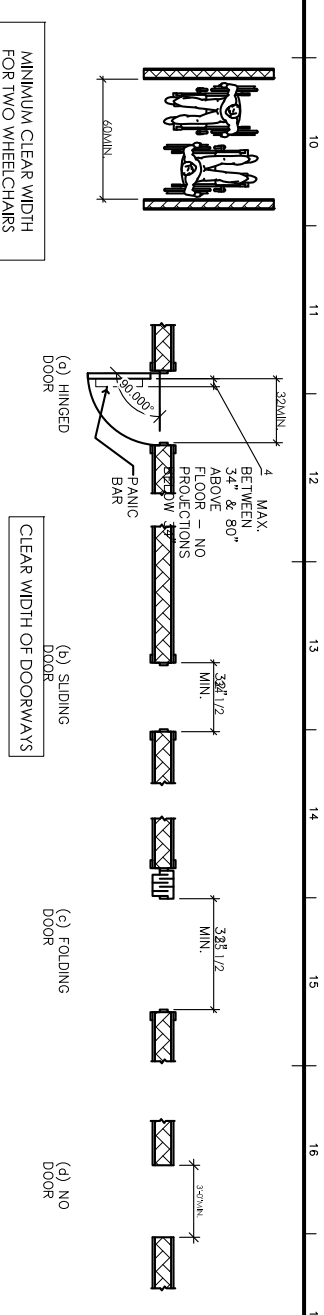
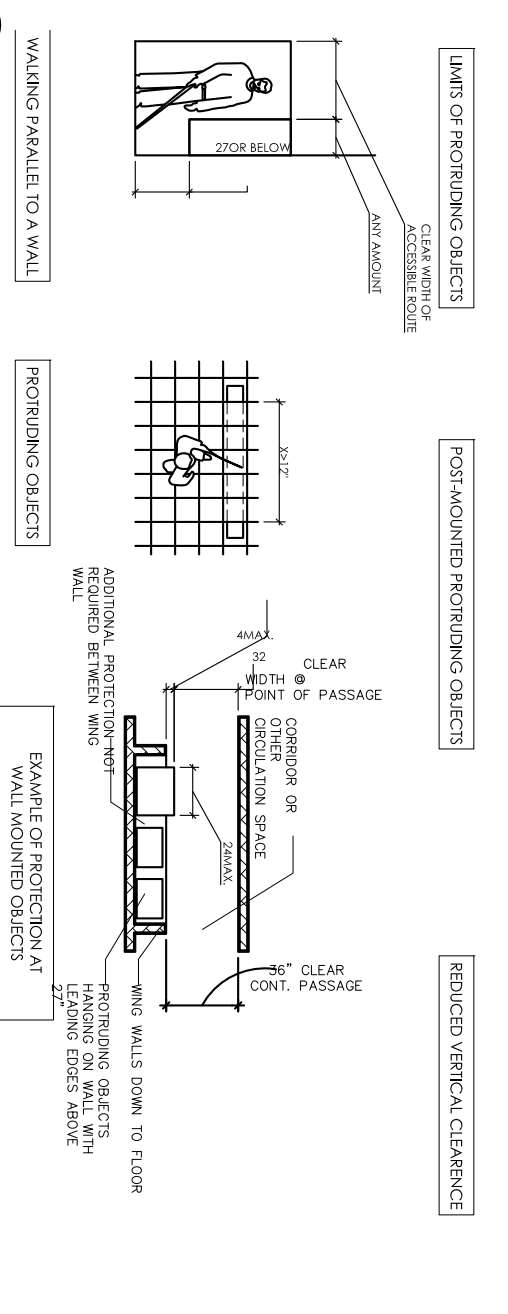
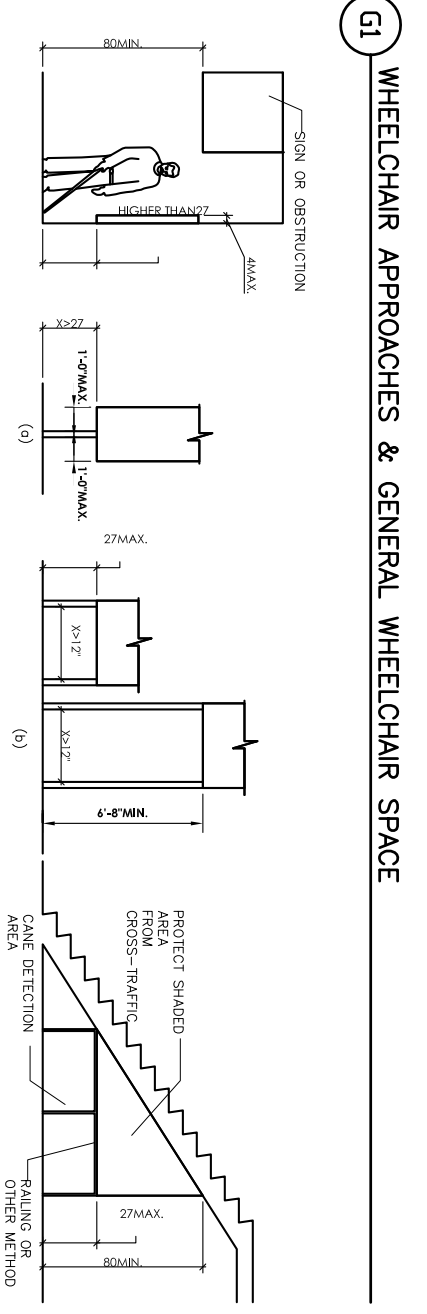
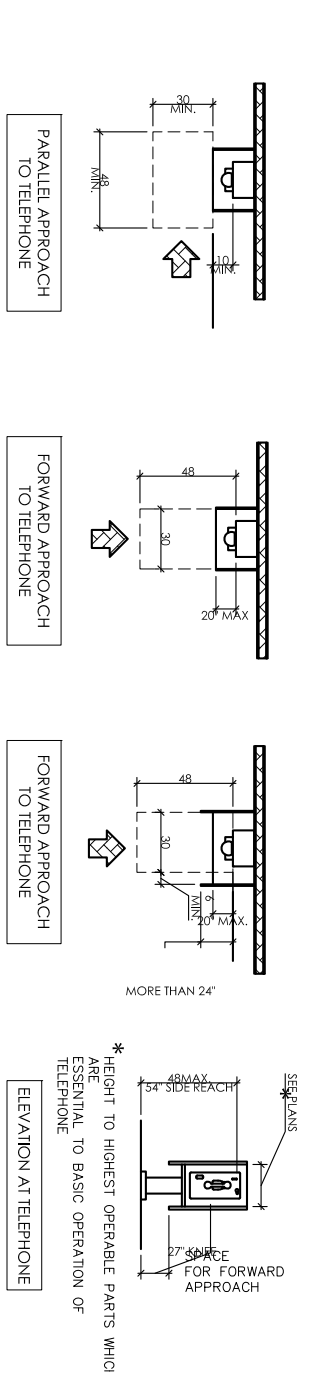
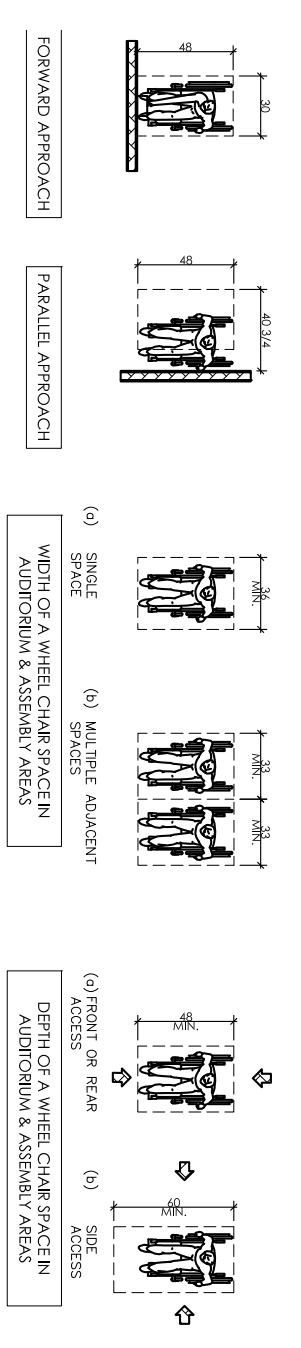
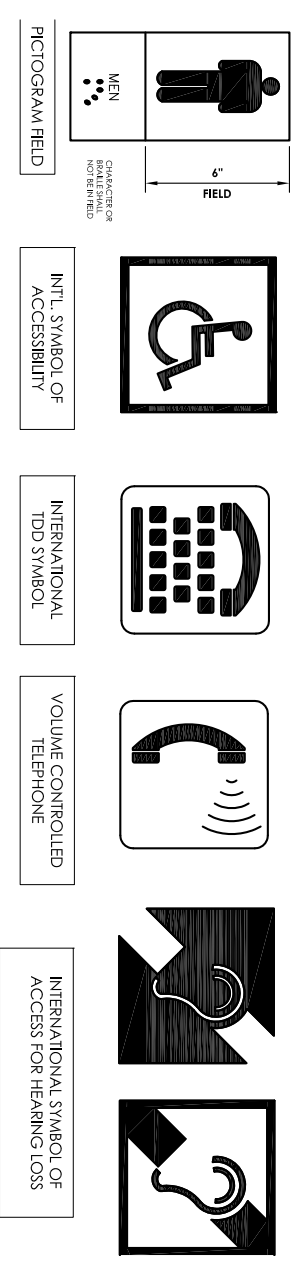
**OCCUPANCY COUNT**

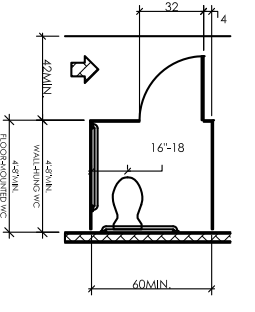
| ROOM | ROOM NAME               | USE DESCRIPTION          | AREA      | AREA/OCC     | LOAD   |
|------|-------------------------|--------------------------|-----------|--------------|--------|
| 100  | VESTIBULE               | CIRCULATION              | 119 SF    | N/A          | 0      |
| 101  | CIRCULATION             | CIRCULATION              | 879 SF    | N/A          | 0      |
| 102  | RECEPTION               | BUSINESS                 | 100 SF    | 100 SF GROSS | 1.00   |
| 103  | WAITING                 | ASSEMBLY CHAIRS ONLY     | 103 SF    | 7 SF NET     | 14.67  |
| 104  | OFFICE                  | BUSINESS                 | 117 SF    | 100 SF GROSS | 1.17   |
| 105  | OFFICE                  | BUSINESS                 | 174 SF    | 100 SF GROSS | 1.74   |
| 106  | OFFICE                  | BUSINESS                 | 135 SF    | 100 SF GROSS | 1.35   |
| 107  | TLT                     | RESTROOM                 | 43 SF     | N/A          | 0      |
| 108  | MEN'S TLT               | RESTROOM                 | 81 SF     | N/A          | 0      |
| 109  | WOMEN'S TLT             | RESTROOM                 | 81 SF     | N/A          | 0      |
| 110  | OPEN OFFICE             | BUSINESS                 | 569 SF    | 100 SF GROSS | 5.69   |
| 111  | OPEN OFFICE             | BUSINESS                 | 174 SF    | 100 SF GROSS | 1.74   |
| 112  | CONFERENCE              | ASSEMBLY TABLES & CHAIRS | 174 SF    | 15 SF NET    | 11.62  |
| 113  | NORTH SERVER ROOM       | ACCESSORY STORAGE        | 95 SF     | 300 SF GROSS | 0.32   |
| 114  | OFFICE                  | BUSINESS                 | 129 SF    | 100 SF GROSS | 1.29   |
| 115  | OFFICE                  | BUSINESS                 | 190 SF    | 100 SF GROSS | 1.90   |
| 116  | CIRCULATION             | CIRCULATION              | 2,884 SF  | N/A          | 0      |
| 117  | OFFICE AREA #1          | ACCESSORY STORAGE        | 374 SF    | 300 SF GROSS | 1.25   |
| 118  | CLASSROOM               | EDUCATIONAL CLASSROOM    | 480 SF    | 20 SF NET    | 23.99  |
| 119  | CLASSROOM               | EDUCATIONAL CLASSROOM    | 480 SF    | 20 SF NET    | 23.12  |
| 120  | RECORDS RETENTION AREA  | ACCESSORY STORAGE        | 335 SF    | 300 SF GROSS | 1.12   |
| 121  | CLASSROOM               | EDUCATIONAL CLASSROOM    | 376 SF    | 20 SF NET    | 18.79  |
| 122  | OFFICE                  | BUSINESS                 | 366 SF    | 100 SF GROSS | 3.66   |
| 123  | CLASSROOM               | EDUCATIONAL CLASSROOM    | 376 SF    | 20 SF NET    | 18.79  |
| 124  | OFFICE                  | BUSINESS                 | 362 SF    | 100 SF GROSS | 3.62   |
| 125  | CLASSROOM               | EDUCATIONAL CLASSROOM    | 376 SF    | 20 SF NET    | 18.79  |
| 126  | OFFICE                  | BUSINESS                 | 362 SF    | 100 SF GROSS | 3.62   |
| 127  | CLASSROOM               | EDUCATIONAL CLASSROOM    | 375 SF    | 20 SF NET    | 18.76  |
| 128  | OFFICE                  | BUSINESS                 | 367 SF    | 100 SF GROSS | 3.67   |
| 129  | CLASSROOM               | EDUCATIONAL CLASSROOM    | 363 SF    | 20 SF NET    | 18.13  |
| 130  | OFFICE                  | BUSINESS                 | 361 SF    | 100 SF GROSS | 3.61   |
| 131  | COMPUTER BASED TRAINING | EDUCATIONAL CLASSROOM    | 358 SF    | 20 SF NET    | 17.92  |
| 132  | SIMULATOR ROOM          | EDUCATIONAL CLASSROOM    | 418 SF    | 20 SF NET    | 20.90  |
| 133  | CLASSROOM               | EDUCATIONAL CLASSROOM    | 435 SF    | 20 SF NET    | 21.77  |
| 134  | MEN'S TLT               | RESTROOM                 | 422 SF    | N/A          | 0      |
| 135  | WOMEN'S TLT             | RESTROOM                 | 379 SF    | N/A          | 0      |
| 136  | BREAKROOM               | EDUCATIONAL CLASSROOM    | 530 SF    | 20 SF NET    | 26.52  |
| 137  | CLASSROOM               | EDUCATIONAL CLASSROOM    | 481 SF    | 20 SF NET    | 24.04  |
| 138  | SDU B SIDE #13          | BUSINESS                 | 800 SF    | 100 SF GROSS | 8.00   |
| 139  | ARLROCK A               | BUSINESS                 | 183 SF    | 100 SF GROSS | 1.83   |
| 140  | ARLROCK B               | BUSINESS                 | 183 SF    | 100 SF GROSS | 1.83   |
| 141  | ARLROCK C               | BUSINESS                 | 180 SF    | 100 SF GROSS | 1.80   |
| 142  | GEAR DECON AND STORAGE  | BUSINESS                 | 151 SF    | 100 SF GROSS | 1.51   |
| 143  | ENTRY SUPPORT           | BUSINESS                 | 245 SF    | 100 SF GROSS | 2.45   |
| 144  | COTTON GOODS            | ACCESSORY MECHANICAL     | 92 SF     | 300 SF GROSS | 0.31   |
| 145  | ELEC/MECH AND MAINT     | ACCESSORY MECHANICAL     | 359 SF    | 300 SF GROSS | 1.20   |
| 146  | AIR COMPRESSOR          | ACCESSORY STORAGE        | 328 SF    | 300 SF GROSS | 1.09   |
| 147  | TELECOM                 | ACCESSORY MECHANICAL     | 88 SF     | 300 SF GROSS | 0.29   |
| 148  | FIRE SPRINKLER          | ACCESSORY MECHANICAL     | 76 SF     | 300 SF GROSS | 0.25   |
| 149  | ELEC DISTRIBUTION       | ACCESSORY MECHANICAL     | 124 SF    | 300 SF GROSS | 0.41   |
| 150  | TRAINING LAB            | MANUFACTURING            | 8,708 SF  | 200 SF GROSS | 43.54  |
| 200  | MEZZANINE               | EDUCATIONAL VOCATIONAL   | 565 SF    | 50 SF NET    | 11.31  |
|      |                         |                          | 26,288 SF |              | 390.39 |

**M14 MEZZANINE CODE PLAN**

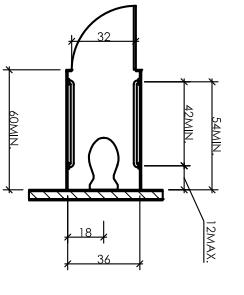


|  |  |   |   |  |  |
|--|--|---|---|--|--|
| <p><b>G0.2</b></p> <p>SHEET CONTENTS<br/>CODE PLAN</p> | <p>SEH FILE NO. 117652<br/>ISSUE DATE 11/14/11<br/>DESIGNED BY RS, R6<br/>DRAWN BY<br/>PROJECT MGR</p> | <p>2011<br/><b>PCAPP TRAINING FACILITY</b><br/>PUEBLO, COLORADO</p> | <p><i>BID SET</i></p> <p>NOT FOR CONSTRUCTION</p> | <p><b>Short Elliott Hendrickson Inc.</b><br/>Thatcher Building<br/>603 North Main Street, Suite 225<br/>Pueblo, CO 81003-3138<br/>719.542.6481   719.542.1251 fax<br/>www.sehinc.com</p> |  |
|--|--|---|---|--|--|

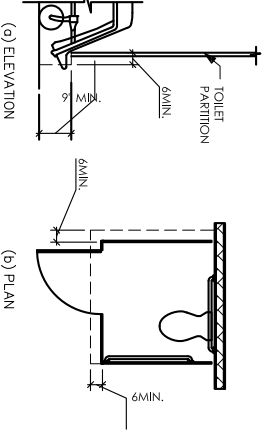




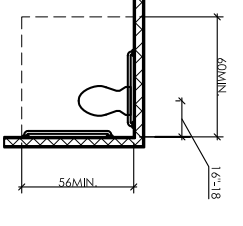
WHEELCHAIR ACCESSIBLE TOILET COMPARTMENT AND DOOR



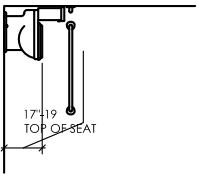
AMBULATORY ACCESSIBLE COMPARTMENT AND DOOR



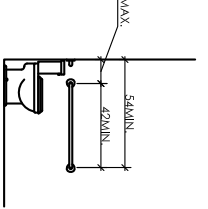
TOILET COMPARTMENT TOE CLEARANCE



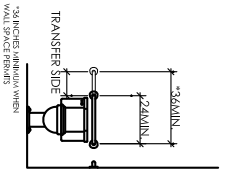
WATER CLOSET SIZE & SIZE OF CLEARANCE FOR WATER CLOSET



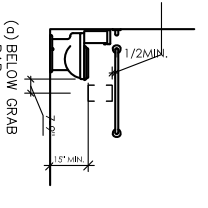
HEIGHT OF WATER CLOSET



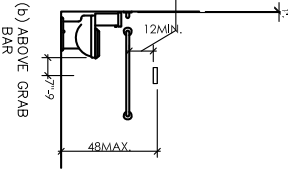
SIDE WALL GRAB BAR FOR WATER CLOSET



REAR WALL GRAB BAR FOR WATER CLOSET

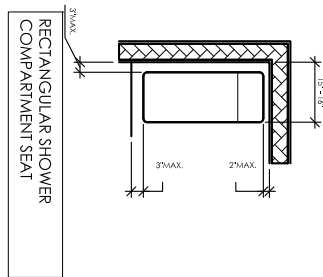


(a) BELOW GRAB BAR

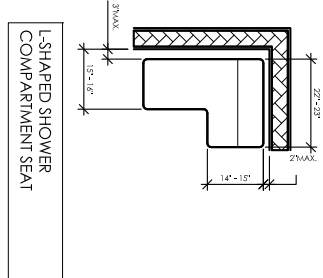


(b) ABOVE GRAB BAR

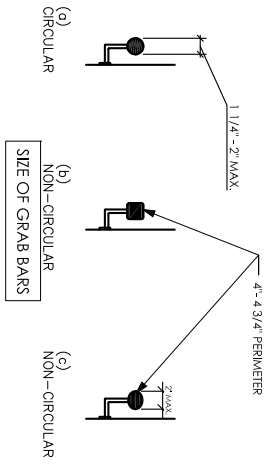
M1 TOILET STALL CLEARANCES AND ACCESSORIES



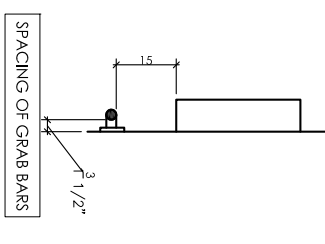
RECTANGULAR SHOWER COMPARTMENT SEAT



L-SHAPED SHOWER COMPARTMENT SEAT

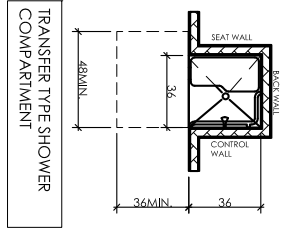


(a) CIRCULAR  
(b) NON-CIRCULAR  
(c) NON-CIRCULAR

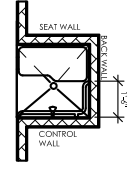


SPACING OF GRAB BARS

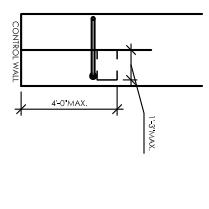
H13 SHOWER COMPARTMENTS



TRANSFER TYPE SHOWER COMPARTMENT



GRAB-BARS IN TRANSFER-TYPE SHOWERS



CONTROLS IN TRANSFER TYPE SHOWERS

H1 BATHROOM / TOILET COMPARTMENT GRAB BARS

SHEET CONTENTS  
ADA STANDARDS  
G0.4

SEH FILE NO. 117652  
ISSUE DATE 11/14/11  
DESIGNED BY Re  
DRAWN BY RS, Re  
PROJECT MGR -

2011  
PCAPP TRAINING FACILITY  
PUEBLO, COLORADO

| MARK | DATE | DESCRIPTION |
|------|------|-------------|
| -    | -    | BID SET     |

BID SET  
NOT FOR CONSTRUCTION

Short Elliott Hendrickson Inc.  
Thatcher Building  
503 North Main Street, Suite 225  
Pueblo, CO 81003-3138  
719.542.6481 malh | 719.542.1251 fax  
www.sehinc.com

